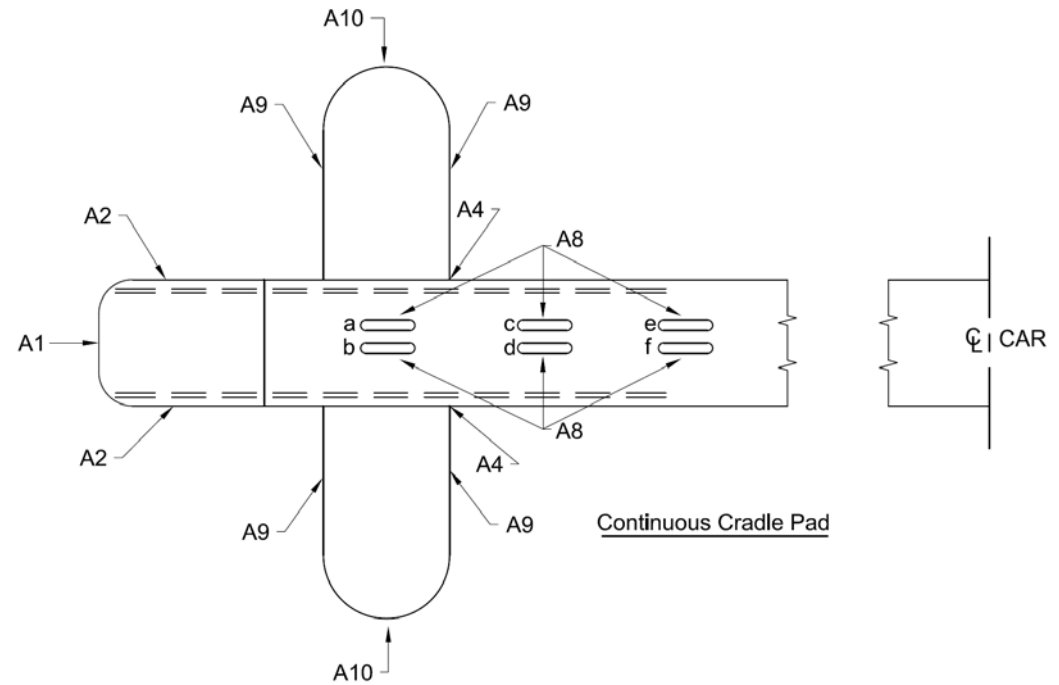


Location Designations:

Pad-to-Tank Welds (Designated with an 'A' code)

Code	Description	Location	Includes
A1	Front sill pad-to-tank transverse weld.	A- & B-Ends	Full length of weld, including portion around corner of pad.
A2	Front sill pad longitudinal welds.	AR, AL, BR, BL	Full length of weld to termination at bolster pad.
A4	Sill pad longitudinal weld.	AR, AL, BR, BL	6" of weld from termination.
A8	Sill pad-to-tank slot welds.	A- & B-Ends (2 to 16 places per car)	Last 6" of weld at each end of slot.
A9	Bolster pad-to-tank transverse weld.	ARO, ARI, ALO, ALI, BRO, BRI, BLO, BLI	36" from junction with sill pad.
A10	Top-of-bolster pad longitudinal weld.	AL, AR, BL, BR	Full length of weld

Sketch/Description:



Use the "Generic Tank Head Brace." template for head brace defects.
 Use the "Generic Body Bolster." template for body bolster defects.
 Use the TCID "Record Shell/Sill Damage" button for:

- All parent metal defects.
- All structural defects outside the scope of these templates.

Location Designations:

Sill-to-Pad Welds (Designated with an 'B' code)

Code	Description	Location	Includes
B2	Outboard termination of longitudinal weld (outside of sill).	AR, AL, BR, BL	Last 6" of weld.
B22	Outboard termination of longitudinal weld (inside of sill).	AR, AL, BR, BL.	Last 6" of weld.
B4	Inboard termination of longitudinal weld (outside of sill).	AR, AL, BR, BL	Last 6" of weld including any portion of weld that wraps around sill and connects with B44.
B44	Inboard termination of longitudinal weld (inside of sill).	AR, AL, BR, BL	Last 6" of weld.

Use the "Generic Tank Head Brace." template for head brace defects.
 Use the "Generic Body Bolster." template for body bolster defects.
 Use the TCID "Record Shell/Sill Damage" button for:

- All parent metal defects.
- All structural defects outside the scope of these templates.

Sketch/Description:

